



GAT MONTHLY MEMBERSHIP PROGRESS REPORT

Results as of: 5/31/2023

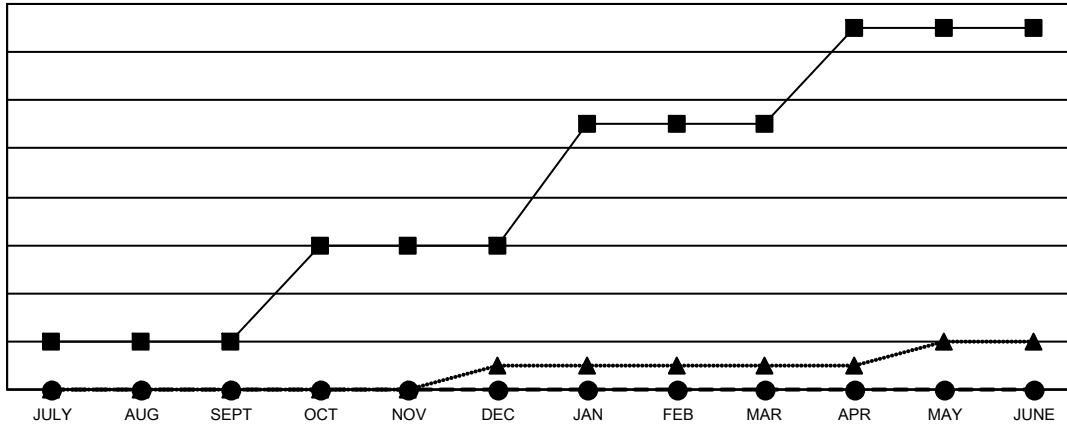
Multiple District 1

LOCATION: ILLINOIS

Clubs			
RESULTS FOR 2022-2023			
QUARTER	NEW CLUB GOAL	NEW CLUBS	DROPPED CLUBS
JULY/AUG/SEPT	2	0	4
OCT/NOV/DEC	4	0	2
JAN/FEB/MAR	5	0	0
APR/MAY/JUNE	4	0	1

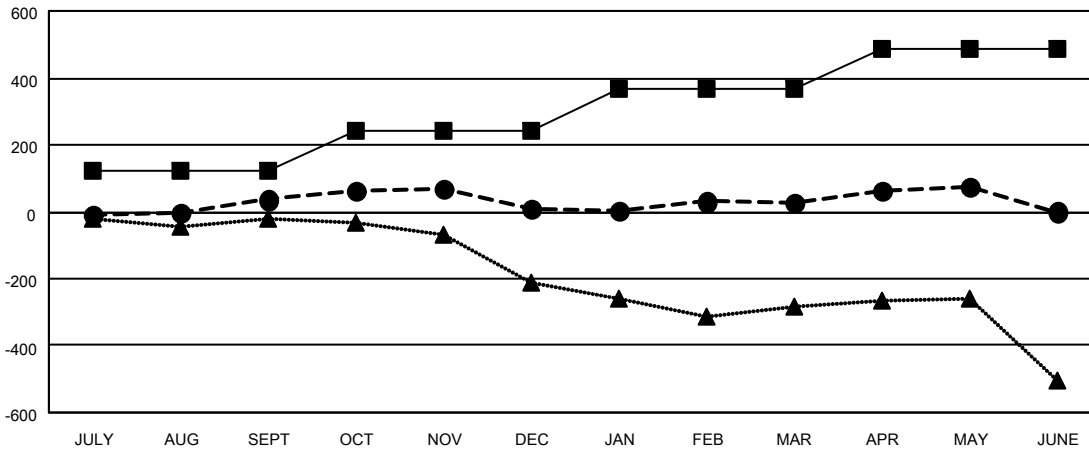
Members			
RESULTS FOR 2022-2023			
QUARTER	MEMBER GROWTH NET GOAL	MEMBER GROWTH ACTUAL	DROPPED MEMBERS ACTUAL (including transfers)
JULY/AUG/SEPT	122	376	299
OCT/NOV/DEC	122	324	320
JAN/FEB/MAR	121	297	236
APR/MAY/JUNE	124	214	154

GOALS AND ACTUAL NEW CLUBS CUMULATIVE



- CURRENT YEAR GOALS FOR NEW CLUBS
- CURRENT YEAR ACTUAL NEW CLUBS
- ▲- LAST YEAR ACTUAL NEW CLUBS

GOALS AND ACTUAL MEMBERS CUMULATIVE



- MEMBER GROWTH NET GOAL
- MEMBER GROWTH ACTUAL
- ▲- LAST YEAR MEMBERSHIP ACTUAL

DROPPED CLUBS: 7	
DROPPED MEMBERS	
DECEASED	181
CLUB CANCELLED	34
OTHER	794
TOTAL	1,009

254 CLUBS OF 449 ADDED 1 OR MORE NEW MEMBERS

[CLICK HERE FOR CUMULATIVE MEMBERSHIP DATA](#)

GENDER DISTRIBUTION	
MALE	8,826 (71.10%)
FEMALE	3,585 (28.88%)
NON BINARY	0 (0.00%)
PREFER NOT TO ANSWER	3 (0.02%)
TOTAL FAMILY UNIT MEMBERS	1,773
FAMILY MEMBERS PAYING HALF DUES	915